



halifax fan

GENERAL FAN HANDINGS & DRIVING ARRANGEMENTS DATASHEET

FACTORIES:



+44 1484 475123



+86 755 8149 0039



+1 262 257 9779



+44 1484 475123



sales@halifax-fan.co.uk



www.halifax-fan.com

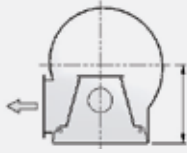


FAN HANDINGS

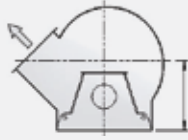
Listed below are some of the most common fan handings used, although Halifax Fan can supply any handing on request. Handings are specified by rotation followed by angle.

N.B. The below fan handing's are shown from the drive side.

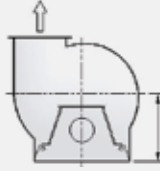
HANDING R0
OPPOSITE L0



HANDING R45
OPPOSITE L45



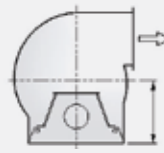
HANDING R90
OPPOSITE L90



HANDING R135
OPPOSITE L135



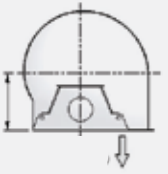
HANDING R180
OPPOSITE L180



HANDING R225
OPPOSITE L225

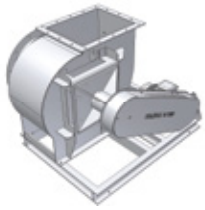


HANDING R270
OPPOSITE L270

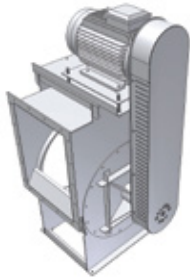


Shown below are the various popular driving arrangements available

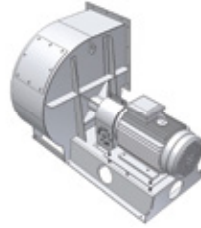
DRIVING ARRANGEMENTS



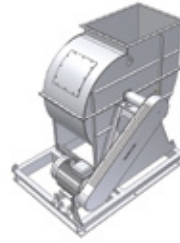
ARRANGEMENT
NO.1



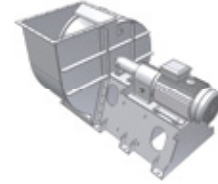
ARRANGEMENT
NO.1 (TOP MOUNTED)



ARRANGEMENT
NO.1/3



ARRANGEMENT
NO.2A



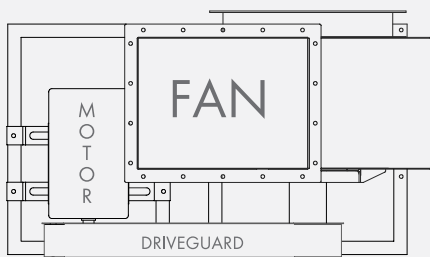
ARRANGEMENT
NO.2A/3



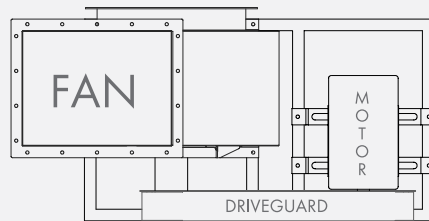
ARRANGEMENT
NO.3 (DIRECT DRIVE)

MOTOR POSITION

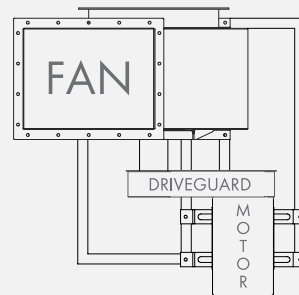
For space saving reasons a series of Baseframe motor position layouts are available for v belt driven fans. The four standard motor positions are shown below; other types of motor mounting (e.g. top or stool mounted, see above) are available on request.



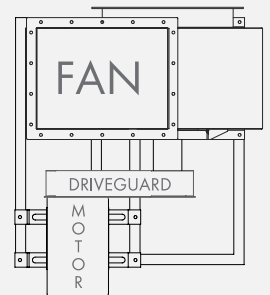
MOTOR POSITION A



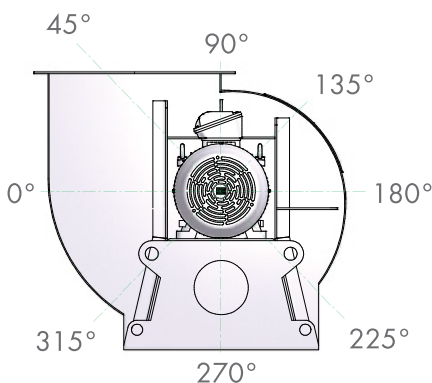
MOTOR POSITION B



MOTOR POSITION C



MOTOR POSITION D



To allow easy access to the impeller for cleaning and inspection, a variety of PANEL POSITIONS are available, these are specified by the angle from the horizontal (when viewed from the drive side)

ACCESS PANEL

